



The Corner Stone

PUBLICATION OF WATERLOO LOCAL #451
AMERICAN POSTAL WORKERS UNION, AFL-CIO
MEMBER OF APWU POSTAL PRESS ASSOCIATION

September 2006



Retiree's Get-Together
Mondays at 1:00pm
University Ave. McDonald's
Across from H-Y-Vee

Convention Issues and Your Pay.

From the President's chair...



Dwight Slaikeu



First off, thanks for once again sending me off to the National Convention. Time was spent in a half day of the National President's Conference, a day plus in the Craft Conferences, 5 days on the convention main floor and seminars following the convention. Off hours were spent seeing the historic treasures of Philadelphia. I was joined by Local delegate Kim as well as State delegates Chris and Meri Kay. Any questions about what a National Convention is all about can be directed to any of us.

Naturally, and since negotiation resolutions are some of the main reasons for being there, the negotiation of our new contract dominated many conversations. Some of the priorities brought up other than pay & benefits, were the upgrading of several positions, most notably the age-old want to upgrade Window Clerks, re-furbishing of the Non-bargaining unit (204B) rules and requirements, excessing changes and doing some work towards replacing the PTF preference system with a bidding system. I will hopefully remember to bring my resolutions books to the next meeting for anyone who'd like to look through them. National negotiations are kicking in about now, check www.apwu.org for whatever updates there may be.

For those who want to know, the decisions on the new polo shirts have finally been made. If nothing changes, they will be available to order October 1, with a first use date of November 18. Kim is supposed to be getting a picture of them sent to her so check with her if you haven't seen the final design.

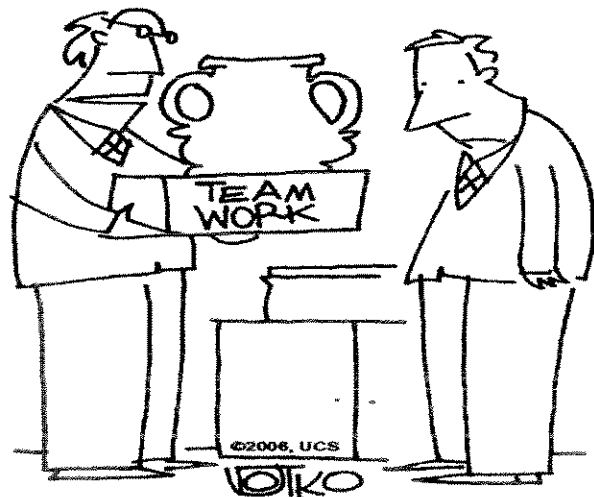
As for local issues, I want to repeat once again, be sure you are checking your paycheck stubs against what you actually worked. In the pay period before last I noticed a shortage of hours on my check. A quick look at my clock rings showed a couple of misguided assumptions made by managers caused 4 hours of overtime to be deleted incorrectly. It was easily corrected but what if I hadn't bothered looking at my

pay stub? Yes, it takes a bit of time each pay period that I'd rather spend doing other things but on the other hand, if I hadn't taken the time, the post office would have approx. \$150.00 of my money in their pocket. **Check your pay every pay period** and if you find an error or even what may be an error, see your supervisor and get it checked out. If they won't help you, contact your Steward.

Yes, there are still problems getting breaks properly in the letter automation section. And again I repeat...those breaks are there for a reason, make sure you're getting them. If you find yourself without a partner, unless you're in the earlier start-up stages of a run, or possibly on the Box Section run, it should not be a long-lasting situation. If it becomes long-lasting, notify the supervisor and remember...you are only one person who should be either feeding or sweeping at any given time, not both at once.

Welcome to the 2 new Maintenance employees, Terry and Roger. Terry is an APWU member and Roger will be when we complete the paperwork. Thanks guys.

See you at the meeting Saturday.



"The workers who won this would be proud, if they knew about it. Any idea where they went after we downsized them?"

Secretary's Report

By: Mike Burke 

APWU LOCAL 451
Date: July 15th 2006

The meeting of the APWU Local 451 was called to order at 11:10 am. at the OP with 14 members, retiree Stan Drewelow and visitor Lavonne Salinas present.

A **motion** to accept the minutes as printed in the Corner Stone was made by Kim Karol and seconded by Chris Salinas. **Motion carried.**

The Treasurers Report was read by Glenn Staudinger. A **motion** to accept the report as read was made by Chris Salinas and seconded by Cindy Miller. **Motion carried.**

Officers Reports:

Presidents Report:

1. COPA- the hat was passed and we collected \$92.00 Wooow!!
2. If you are having problems with the APWU Health Plan, write them down, as Dwight will be talking to their Reps. at the National Convention next month. Please get them to him by Aug. 8th 2006.
3. If you have problems with the computer the USPS has provided for us for job changes etc., see Kim upstairs.
4. As-far-as clerk hiring, Dwight hasn't heard of any exact dates yet.

Old Business:

1. The next meeting will be Saturday September 16th at 11:00 am. at the OP.
2. Picnic Report- everything is still set for Aug. 6, 2006 at Exchange Park at noon. Paper plates and plastic silverware will be provided, however, you may bring your own dishes if you wish. A Horseshoe Game will be set up this year so get your game faces on. Bring your pennies for the Bingo games. Don't forget your cameras!
3. A **motion** was made by Jerry Kemmer and seconded by Cindy Miller to send Chuck Konig to the IFL-CIO Convention next month with normal and customary expenses paid. **Motion carried.**

New Business:

Cindy Miller stated that our supervisors are supposed to be trained on The ERRP Process (Ergonomic Risk Reduction Process). If you have any suggestions related to wear and tear on our bodies, get them to Cindy Miller. Bob Berendes and Cindy Miller are both on the ERRP Team.

Kim Karol wants to remind everyone to get registered to vote if you are not already registered. Also, think about absentee voting as opposed not making it to vote. This is an important time for union members to get out and vote in the next election. Our jobs are always on the line.

A **motion** was made by Glenn Staudinger and seconded by Kim Karol to rent a small safe-deposit-box to keep our important union papers in. **Motion carried.**

Drawing:

A **motion** was made by Jerry Kemmer and seconded by Linda Youngberg to hold the drawing. **Motion carried.** Paulette Woods was the winner!!!!

Adjourn:

A **motion** was made by Chris Salinas and seconded by Jerry Kemmer to adjourn. **Motion carried** at 11:51 am.

Members present:

Kim Karol, Linda Youngberg, Gary Acuff, Cindy Miller, Bob Berendes, Cary Purcell, Chris Salinas, Mike Burke, Dwight Slaikeu, Nancy Hemesath, Rose Ann Garvey, Jerry Kemmer, Paulette Woods and Glenn Staudinger.

/signed/ Secretary Michael J. Burke

~~~~~  
**GET ORGANIZED!!**



**SIGN UP A NON-MEMBER**  
~~~~~

Nominations will be accepted for the union officers for the next term of office.

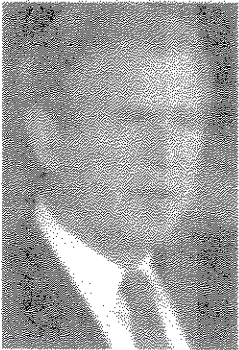
Bring your nomination(s) to the Saturday's meeting.

Use your power as a member!

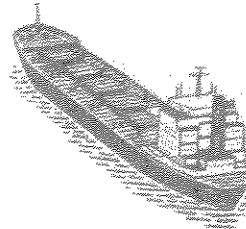
AMERICA WORKS BEST WHEN WE SAY ...

UNION YES  

ARE YOU BETTER OFF YET?

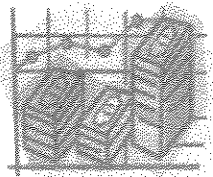


"This economy is powerful, productive and prosperous. And we intend to keep it that way." - George W. Bush, May 2006



Trade:

2005 trade deficit	\$723 billion (a new record)
2005 trade deficit with China	\$202 billion
Projected 2006 trade deficit	Over \$800 billion

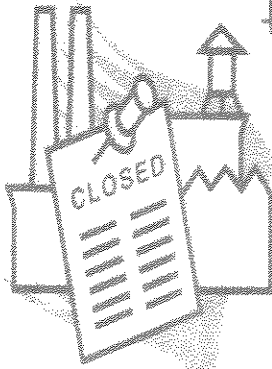


Debt:

Total national debt the year before Bush took office	\$5,674,178,209,886
Total national debt today	\$8,368,050,908,810
Current increase per day	\$1.75 billion

President George W. Bush claims

the economy is humming along nicely. The fact is—the economic growth that is occurring is benefiting only the wealthiest Americans. Workers are among the 90 percent of Americans who are losing economic ground under Bush's policies.



Unemployment:

Official unemployment rate for May 2006:	4.6% (17 million people)
Number of long-term (6 months or longer) unemployed Americans as of May 2006:	1.4 million
Discouraged workers (who gave up looking for work and are not counted as unemployed)	823,000
Underemployed (can't find full-time jobs at their skill level)	14 million
Working more than one job	7.8 million

Wages:

Rise in wages for blue-collar and service workers since Bush took office	0%
Rise in the cost of living since Bush took office	8.1%
Number of years since Bush took office that middle-income families have seen their income fall	Five in a row
Share of national income going to corporate profits	7% in 2001/12.2% today
Share of national income that goes to blue-collar and service workers	58.6% in 2001 56.2% today
1982 ratio of CEO pay to worker pay	42 to 1
2003 ratio	300 to 1
2006 ratio	431 to 1



Deficits:

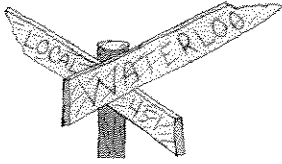
Budget surplus Bush inherited in 2001 when he came into office	\$5.6 trillion
budget deficits amassed by Bush since 2001	\$8.5 trillion

Note: The federal deficit measures government spending above its revenues for one year. The national debt is the cumulative total of all borrowings to cover the annual federal deficits.

VOTE NOVEMBER 7th

We need labor friendly candidates that won't rubber-stamp Bush's failed and worthless economic plans.

Do it for yourself, your children and the future of
AMERICA!



The Corner Stone

AMERICAN POSTAL WORKERS UNION
WATERLOO LOCAL #451
P.O. BOX 387
WATERLOO, IA 50704

Waterloo Local #451 Officers

President - Dwight Slaikeu
Vice-President - Kim Karol
Steward Director - Vanda Blankenship
Secretary - Mike Burke
Treasurer - Glen Staudinger

Trustees - Dave Knebel
Jenelle Brucher
Paulette Woods
Editor - Chris Salinas

NON-PROFIT ORGANIZATION
U.S. POSTAGE
PAID
Waterloo, IA
Permit Number: 107

ALL OPINIONS ARE THOSE OF THE WRITER AND NOT NECESSARILY THOSE OF THE OFFICERS OF WATERLOO LOCAL #451. ALL ARTICLES SUBMITTED FOR PUBLICATION ARE SUBJECT TO REVIEW AND EDITING.

RETURN SERVICE REQUESTED



Union Meeting

Sept. 16th @ 11am

THE OTHER PLACE

3904 Lafayette Rd
Evansdale, IA

**MAKE YOUR VOICE BE HEARD!
ATTEND THE MEETING!**

Bush NLRB Threatens Union Members!

Are you a Team Leader? A Senior Mail Processor? Are you an ET? Or some position that you are responsible for others in some fashion? If you are, the decisions that the National Labor Relation Board (NLRB) make on a series of upcoming cases may well make you ineligible to be a union member on the grounds that you're a supervisor, and therefore, not eligible to be a union member.

Ken Sagar, Secretary-Treasurer of the Iowa AFL-CIO, estimated that several thousand union members in Iowa (Hundreds of thousands nationwide) could become ineligible for union membership if the Bush NLRB reclassifies them as supervisors.

The AFL-CIO (along with the APWU) protested the NLRB's decision not hear oral arguments on this matter known as the "Kentucky River" case. It actually involves 3 cases that were combined by the NLRB. The NLRB has refused to listen to oral arguments since Bush was elected.

The AFL-CIO asks all union members to write to the NLRB and their congressman/senator to demand that oral arguments be heard in these cases.

For More Info:
<http://www.aflcio.org/joinaunion/kyriver.cfm>



**Read your union paper and
learn about matters that affect you!**